

Home

# BROADEN YOUR PERSPECTIVE

**PENTAX**<sup>®</sup>  
MEDICAL

The EUS-J10  
line-up

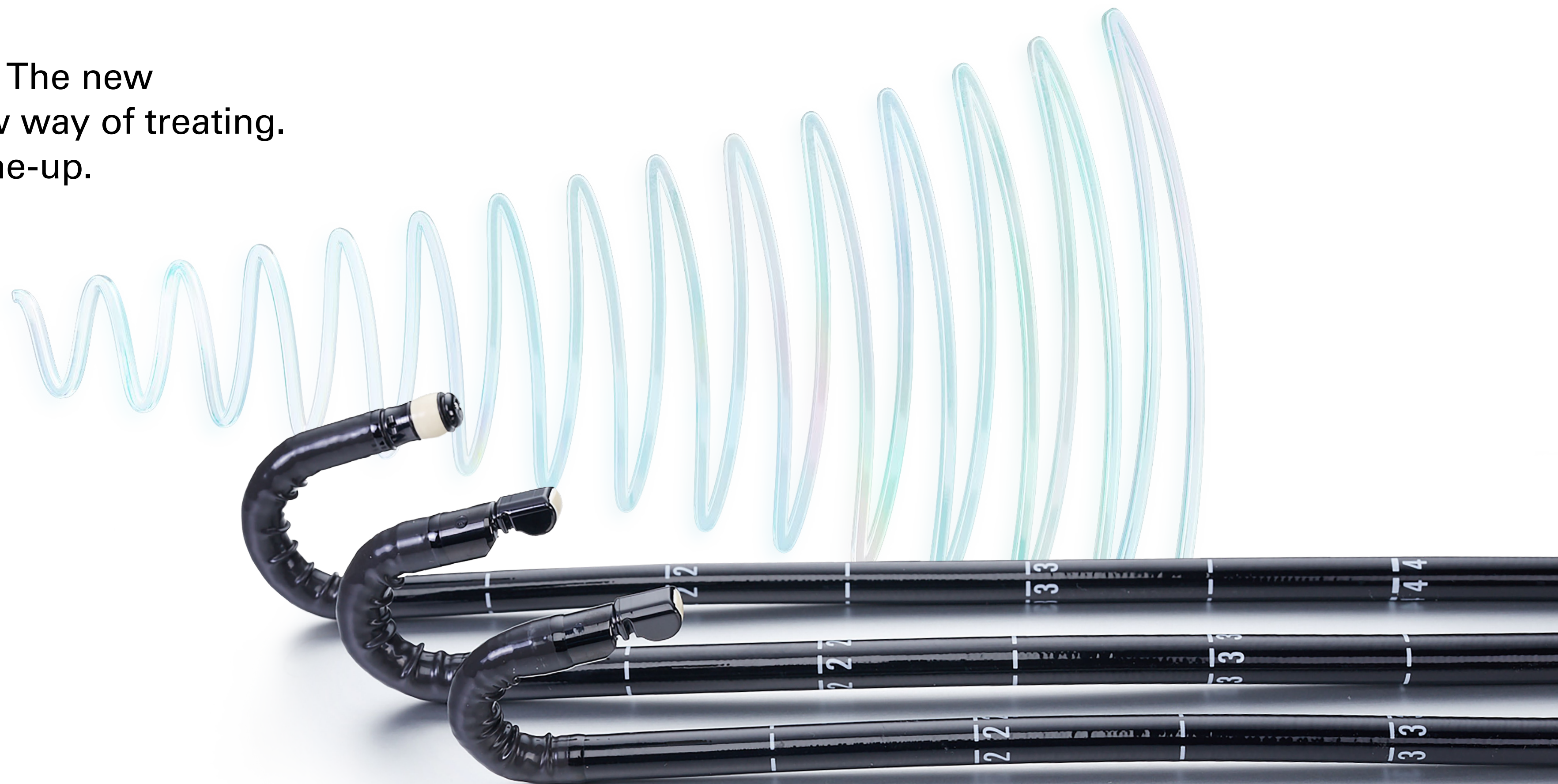
The new way of doing. The new  
way of seeing. The new way of treating.  
Explore the EUS-J10 line-up.

The new  
way of ...

Our Hygiene  
Commitment

The complete  
solution

Triple Aim





# Broaden your perspective. Explore the EUS-J10 line-up.



**The new way of doing. The new way of seeing. The new way of treating.**  
The EUS-J10 line-up is **designed for optimized procedural efficiency** during diagnostic EUS, EUS-FNA/FNB, and therapy.



EG36-J10UR



EG34-J10U



EG38-J10UT



# PENTAX Medical and Ultrasound Scanner:

## Leveraging strong synergies for the best clinical outcomes

The EUS-J10 line-up

The new way of ...

Our Hygiene Commitment

The complete solution

Triple Aim

### Outstanding image quality

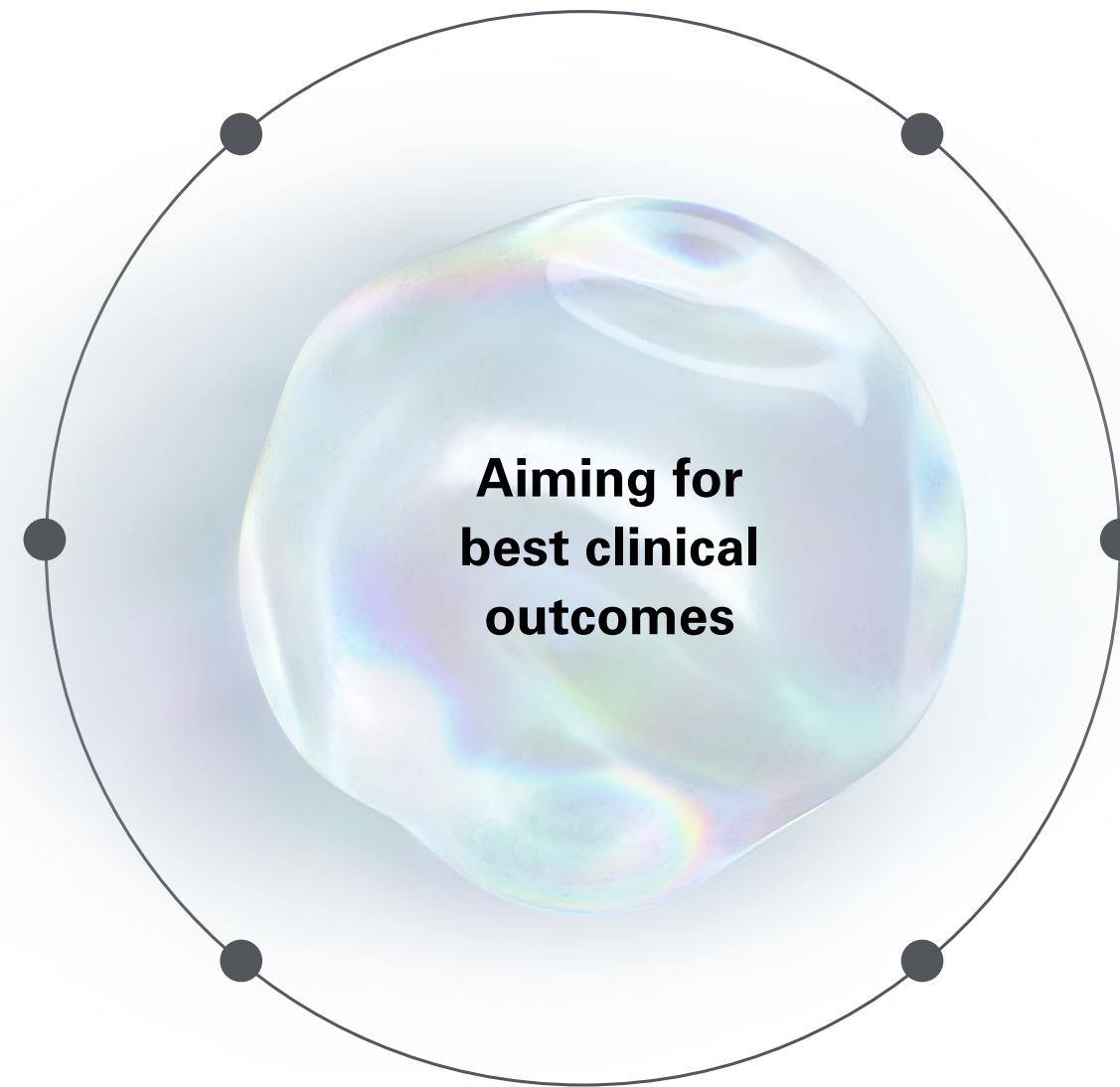
Clear ultrasound and endoscopic images result in improved sensitivity for diagnosis.

### Advanced imaging modalities

Advanced imaging modalities contribute additional diagnostic information.

### Portfolio of ultrasound systems

The largest range of EBUS/EUS compatible ultrasound systems – from budget class to high specialization.



**Aiming for best clinical outcomes**

### Customization and image optimization

Image settings can be optimized for each individual user in real-time on-site.

### Complementary ultrasound transducers

A wide range of ultrasound transducers extends the application for complementary imaging.

### Training and education

Training programs provide the highest standard of professional education across a range of skill levels, from basic to expert.

# Broaden your perspective.

## Explore the EUS-J10 line-up.

PENTAX Medical always has Triple Aim in mind when providing solutions to you, in order to support your goals of improving clinical outcomes, improving healthcare productivity and enhancing provider and patient experience.

The EUS-J10 line-up

The new way of ...

### Optimize access

Increased maneuverability and improved ergonomics contribute superb stability and ease of intubation to support higher procedural success rates, optimized working comfort, and better patient tolerance. *The new way of doing.*

[Click for more information](#)

Our Hygiene Commitment

### Enrich diagnostic findings

Greater detail, better delineation, and superior penetration: a proven PENTAX Medical image quality enhanced to provide improved diagnostic outcomes, and guidance on therapy. *The new way of seeing.*

[Click for more information](#)

The complete solution

### Redefine therapy

A unique, enlarged 4.0 mm working channel expands therapeutic capabilities to advance EUS-guided intervention while providing full control of the procedure. *The new way of treating patients.*

[Click for more information](#)

Triple Aim



# Optimize access.

## The new way of doing.



Supports higher procedural success rates, optimized working comfort, and better patient tolerance through increased maneuverability:





# Optimize access.

## The new way of doing.



Supports higher procedural success rates, optimized working comfort, and better patient tolerance through improved ergonomics and lightweight control body:



Ergonomically designed control knobs

One umbilical cable to reduce stress injury and keep better balance

New braking mechanism for better device control



Air/water nozzle to maintain good endoscopic view

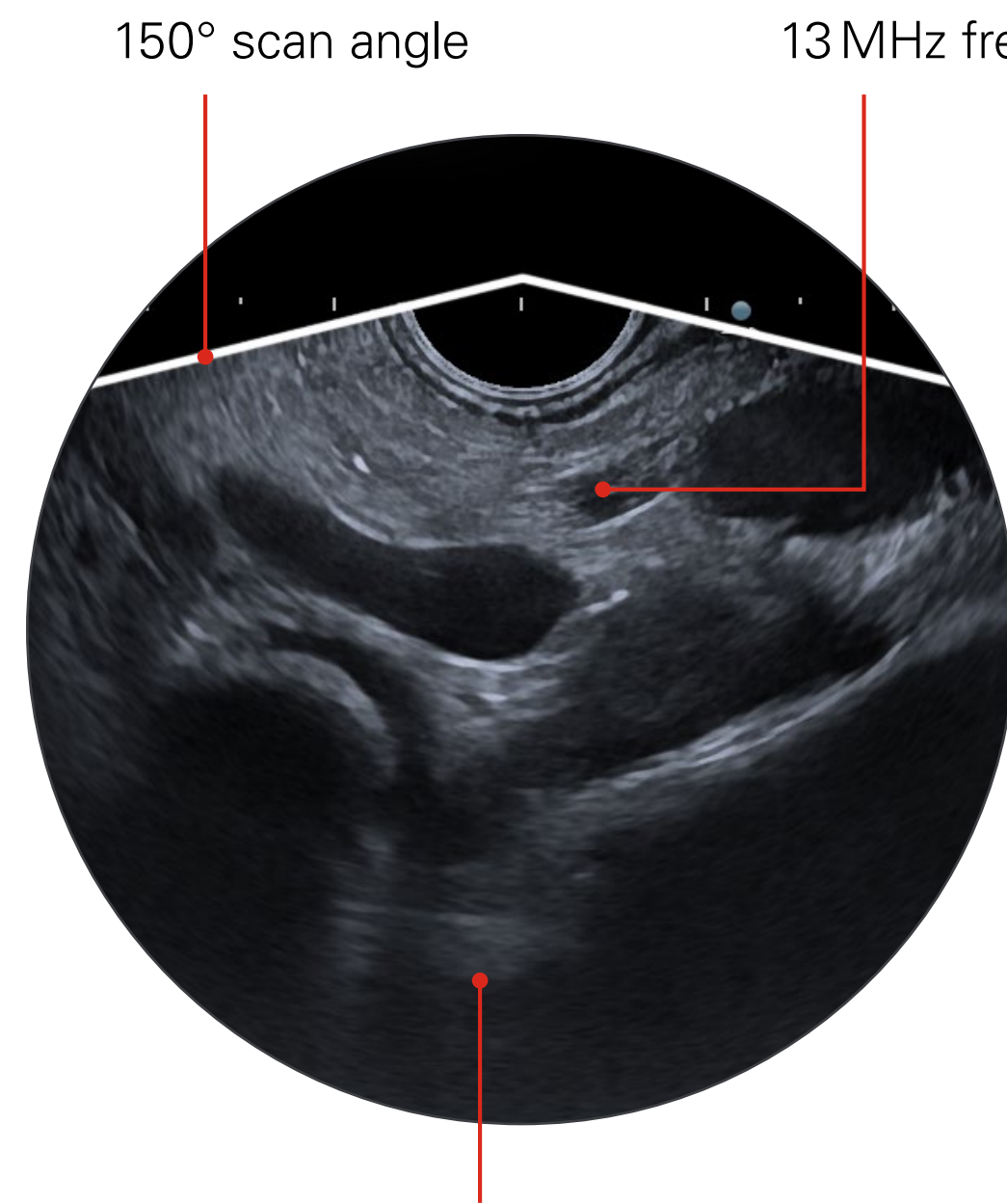
Newly designed for optimized handling:  
- Air/water/balloon feeding valve OF-B207  
- Suction/balloon suction control valve OF-B206



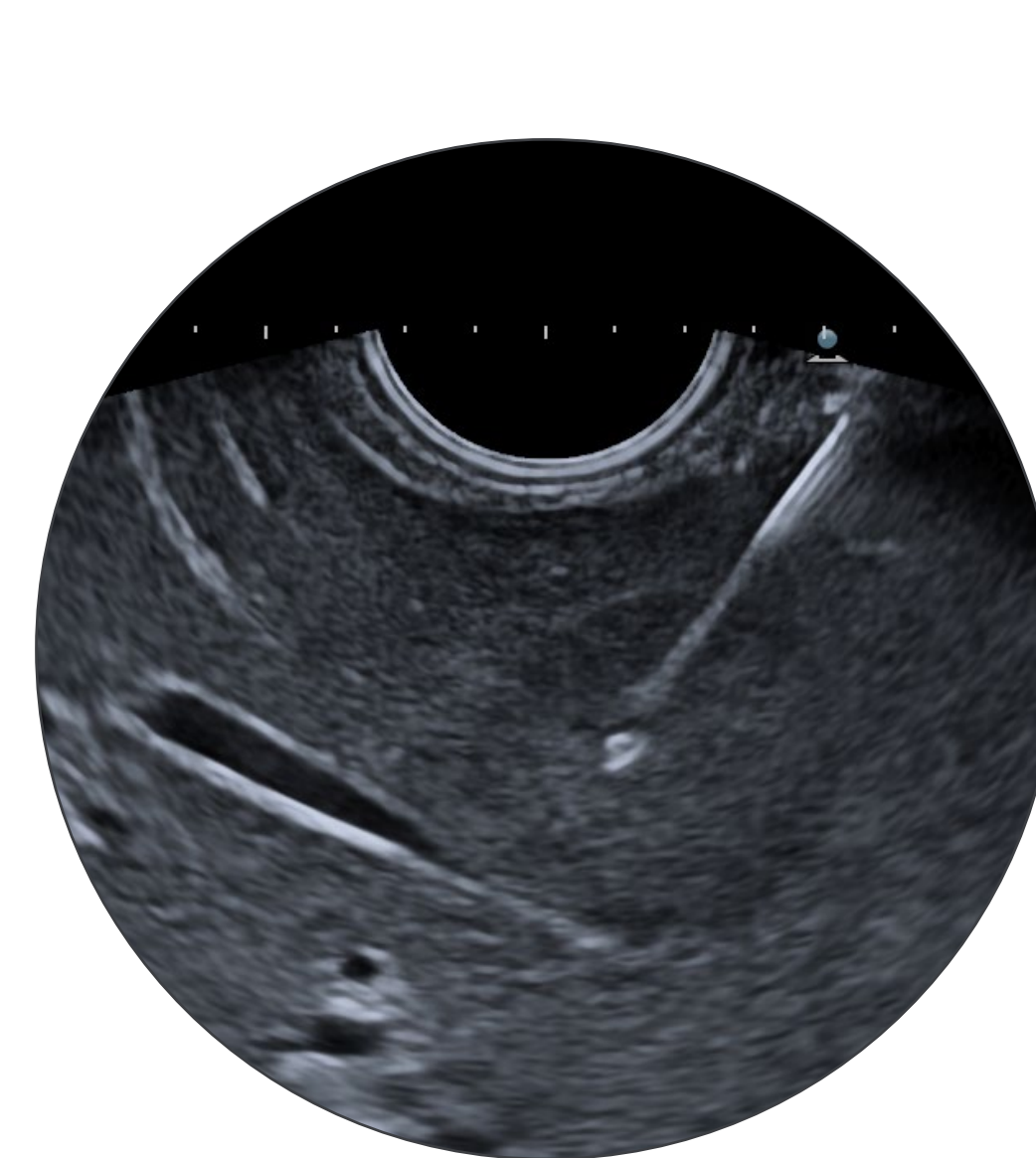
# Enrich diagnostic findings.

## The new way of seeing.

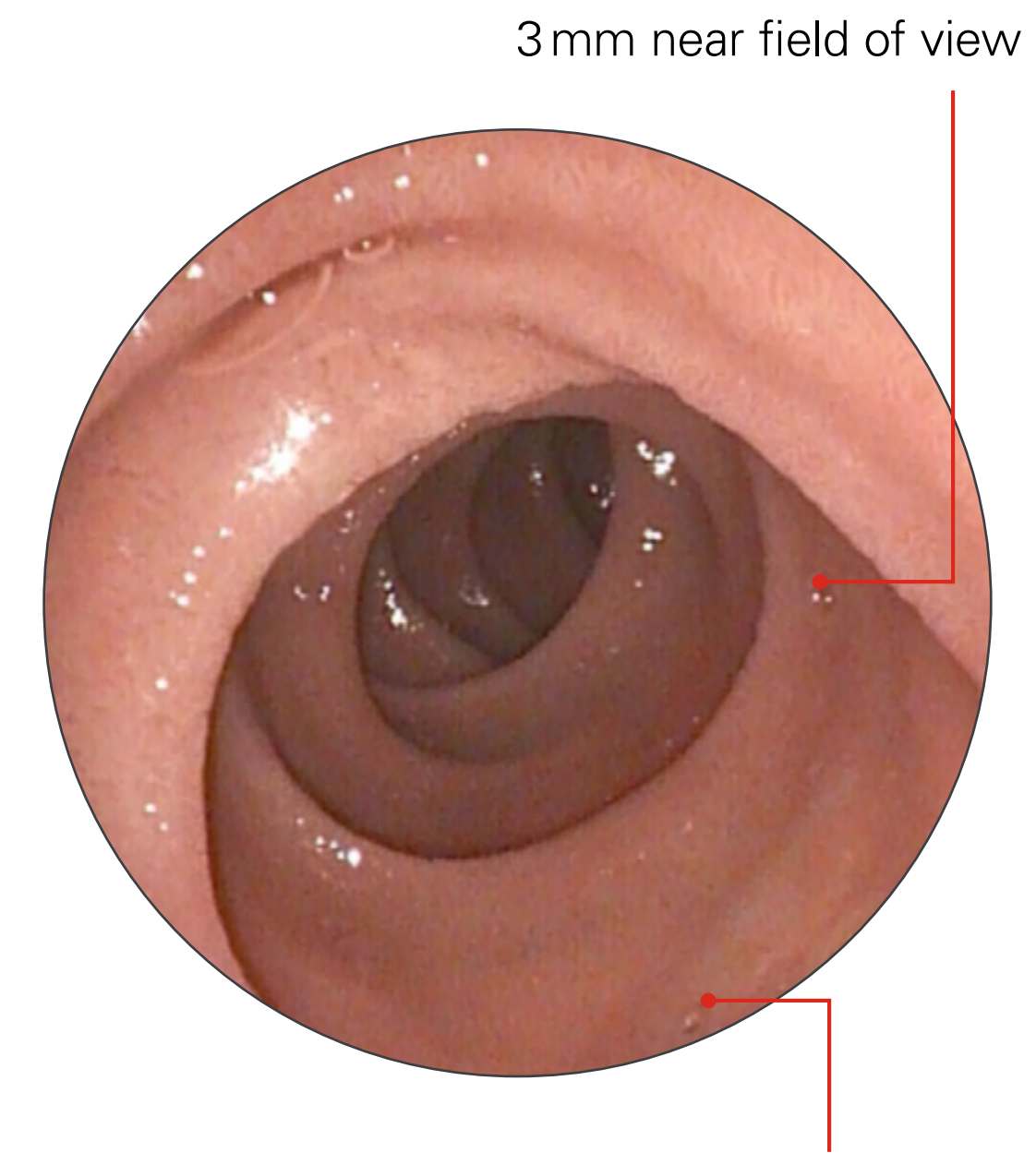
Improved diagnostic outcomes, and guidance on therapy thanks to greater detail, better delineation and superior penetration:



Improved spatial and contrast resolution together with depth penetration due to the latest ultrasound probe crystal technology



EUS-FNA/FNB with clear needle visibility



Improved resolution due to new image sensor

All ultrasound pictures on pages 7, 8 and 9 are obtained with an Arietta V70. Clinical images used are courtesy of our recognized clinical partners.



# Enrich diagnostic findings.

## The new way of seeing.

Improved diagnostic outcomes, and guidance on therapy thanks to greater detail, better delineation and superior penetration:



### **Broadband Harmonic Imaging**

Optimal tissue differentiation with clear delineation of boundaries



### **Compound Imaging**

Improves image resolution with clear visualization of irregular borders, calcifications and enhanced needle visibility



### **eFLOW**

Accurately depicts blood flow dynamics, and helps vessel depiction during challenging EUS-FNA/FNB

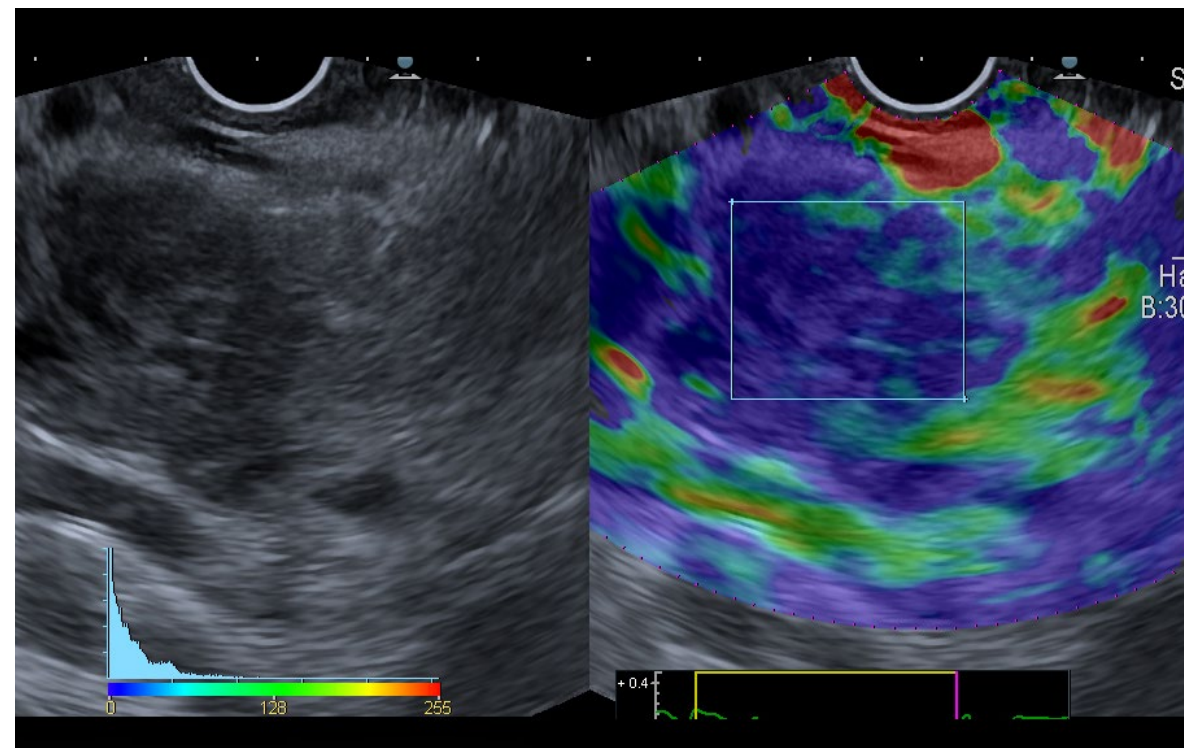


# Enrich diagnostic findings.

## The new way of seeing.

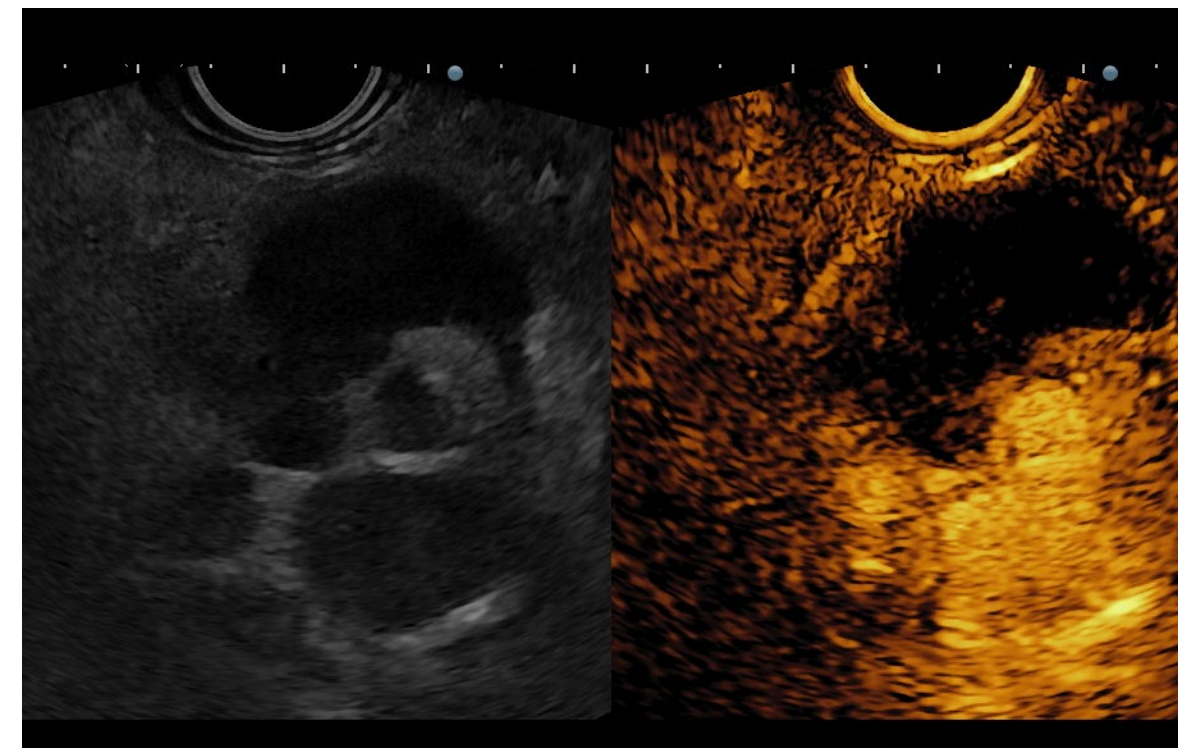


Improved diagnostic outcomes, and guidance on therapy thanks to greater detail, better delineation and superior penetration:



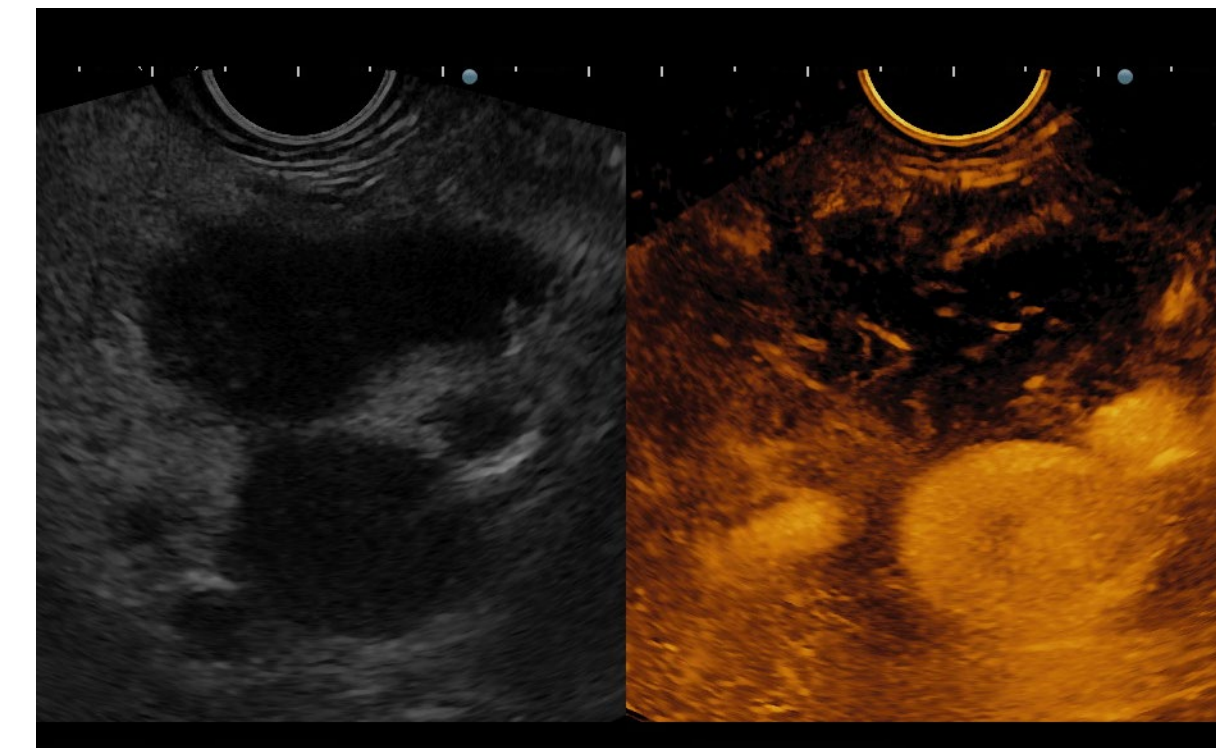
**Elastography (RTE)**  
*(Real-Time Tissue Elastography)*

Aids characterization of focal lesions, lymph nodes, and improves targeting for EUS-FNA/FNB



**Contrast Harmonic Imaging (CHI)**  
*(Real-time display of Contrast Harmonic Imaging)*

CHI aids for differential diagnosis of focal lesions (cystic or solid lesions, particularly pancreatic) and monitoring of treatment response



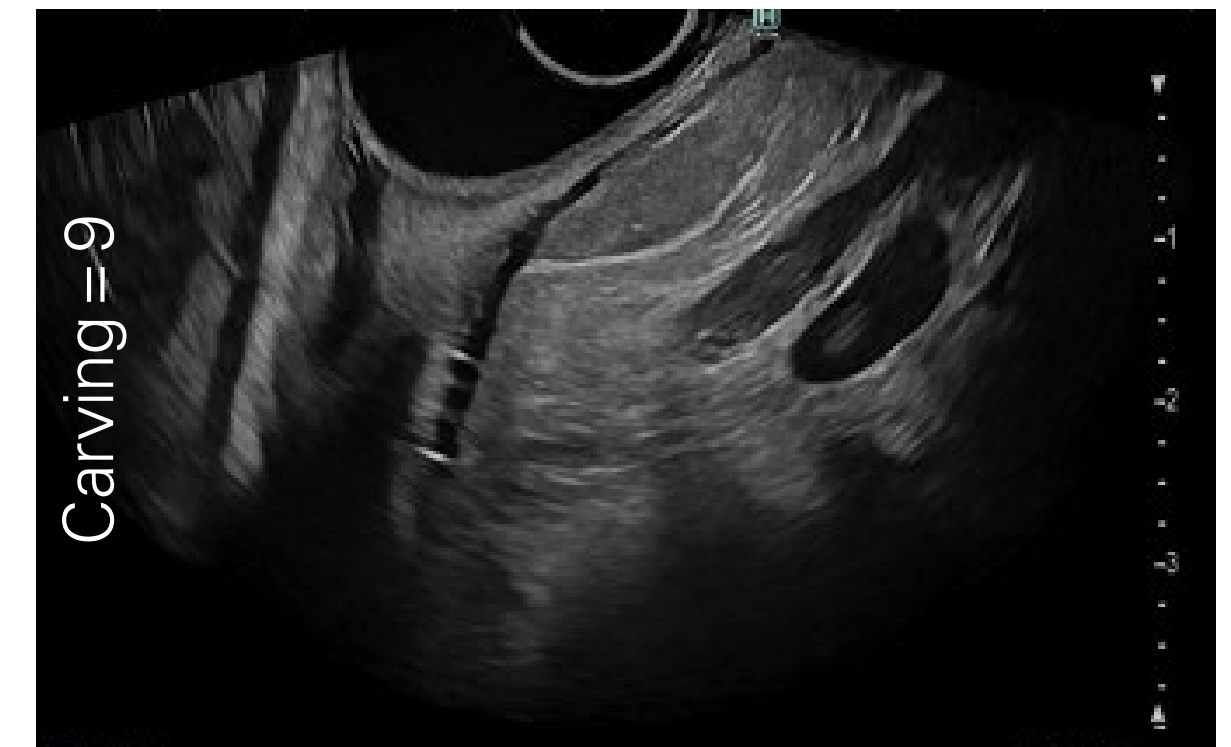
**Contrast Harmonic Imaging (CHI)**  
*(Real-time display of Contrast Harmonic Imaging)*

Accumulation mode, within CHI, provides information of the target's vascular supply or parenchymal perfusion pattern and enables accurate lesion characterization

# Enrich diagnostic findings.

## The new way of seeing.

Noise reduction and tissue structure extraction technologies that provide cleaner images, with delineating the boundaries around organs and emphasizing the subtlest differences in echo pattern.



### Carving Imaging – **Advanced features**

Applies to AR850 and 750 only with all PENTAX Medical EUS-J10 and EUS-70K endoscopes. AR65 can adjust ANR/NNR to achieve similar effect. Images from AR750.



# Enrich diagnostic findings.

## The new way of seeing.

A transmission and reception technology that achieves outstanding imaging quality from the near field to the far field, for a more detailed clinical assessment and accurate diagnosis throughout the whole imaging depth. eFocusing eliminates the need to adjust focal zone and reduces patient-dependent variability.



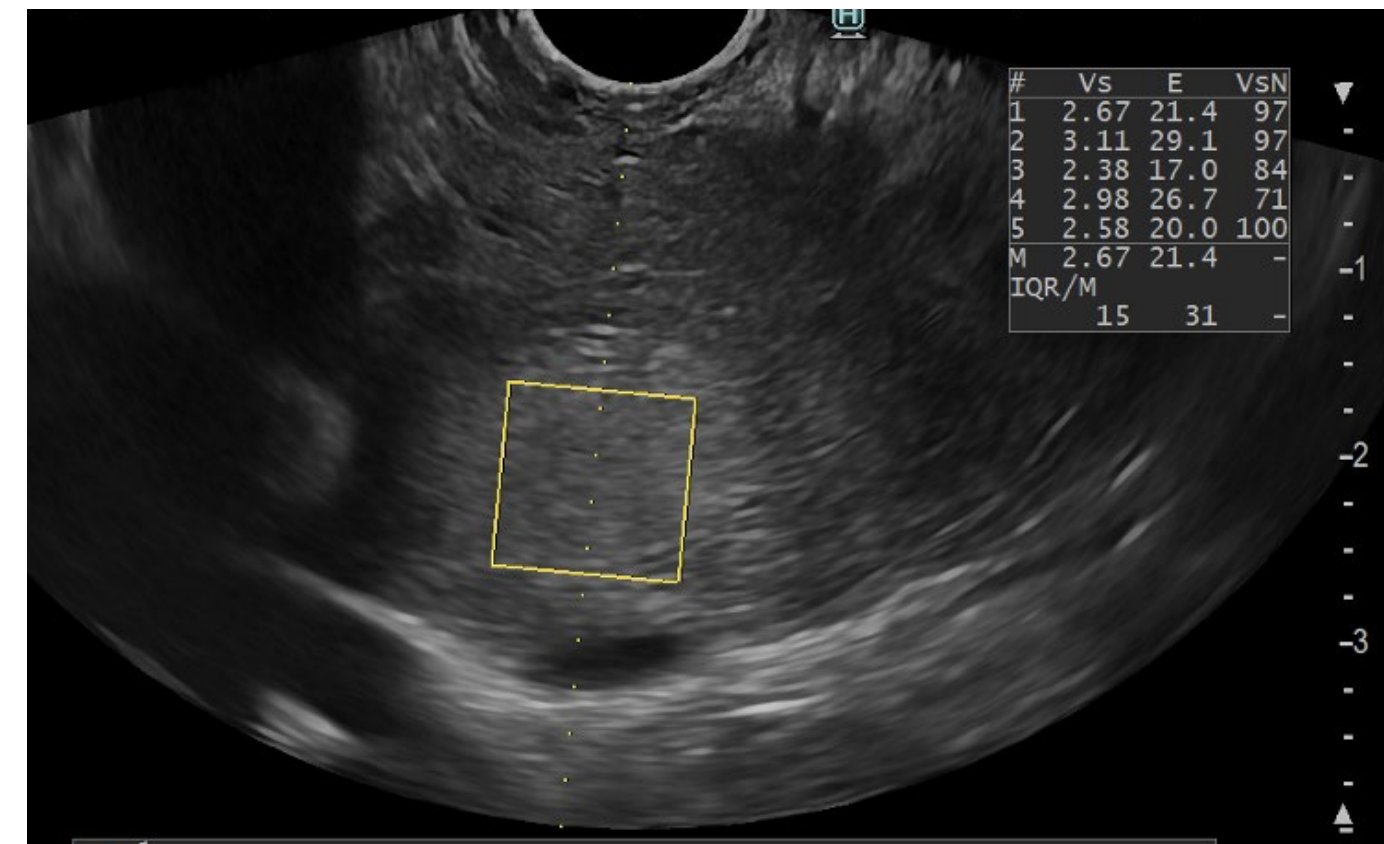
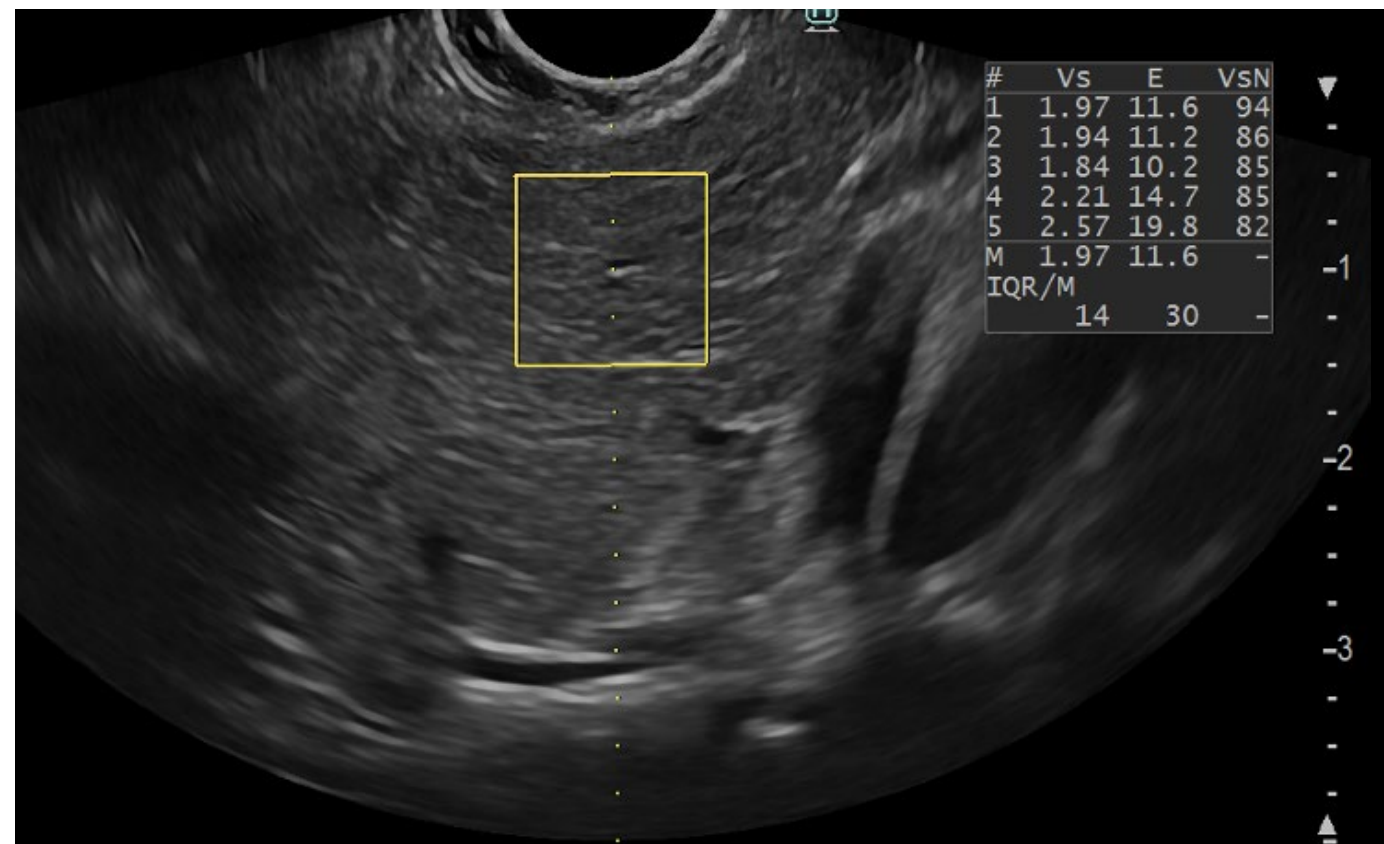
### eFocusing – **Advanced features**

Applies to AR850 with all PENTAX Medical EUS-J10 (from version 4.0) and EUS-70K (from version 4.1) endoscopes, and AR750 with all EUS endoscopes (from version 2.1). Images from AR750.

# Enrich diagnostic findings.

## The new way of seeing.

SWM (shear-wave measurement) is a function to access tissue stiffness by calculating shear wave propagation velocity (Vs). The propagation velocity of shear waves varies with tissue hardness. The SWM also provide Vs effective rate (VsN) as a reliability indicator, as an objective evaluation of the Vs measurement.



### SWM – Advanced features

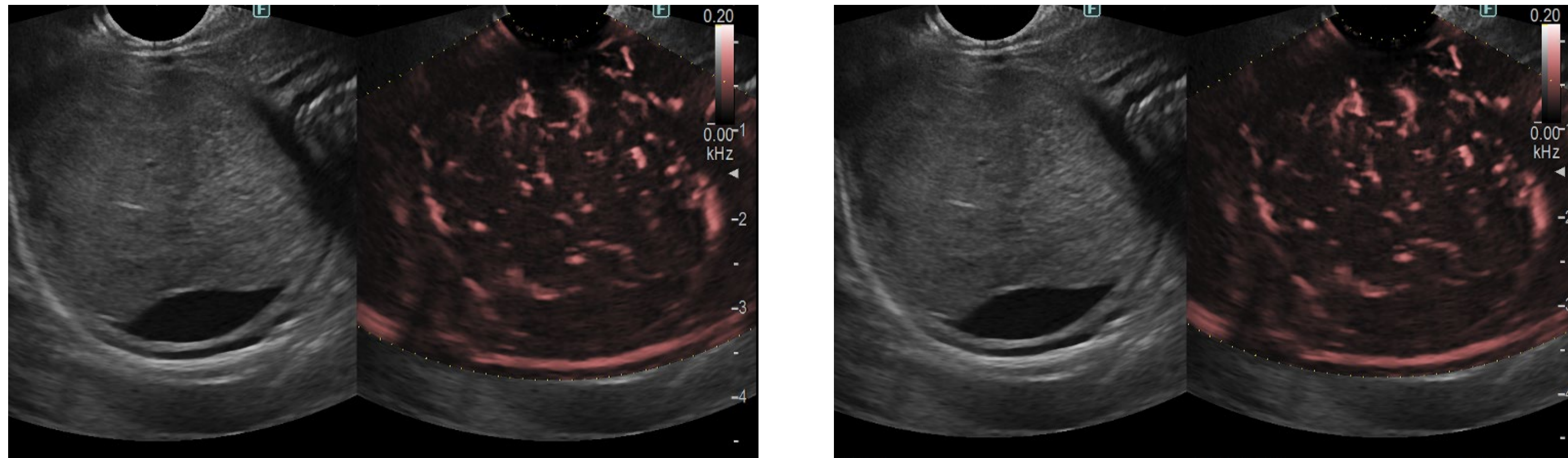
Applies to AR850 (from version 4.0) and AR750 (from version 3.0) with PENTAX Medical endoscopes EG38-J10UT and EG34-J10U.



# Enrich diagnostic findings.

## The new way of seeing.

DFI (detective flow imaging) is a function to visualize bloodstream fine blood flow with high resolution and sensitivity.



### DFI – **Advanced features**

Applies to AR850 (from version 4.1) and AR750 (from version 2.2.1) with PENTAX Medical endoscopes EG38-J10UT and EG34-J10U.



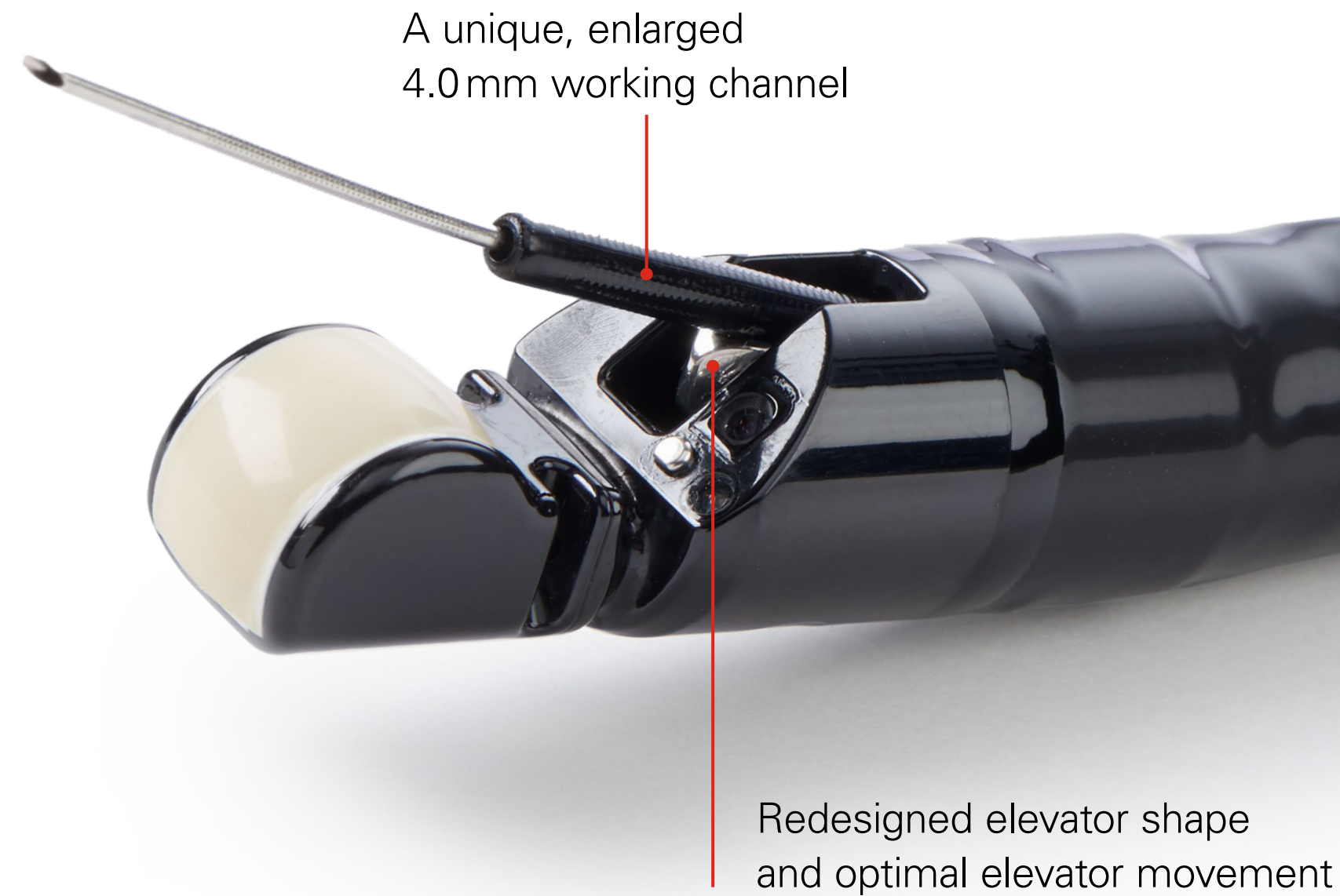
# Redefine therapy.

## The new way of treating.

Expanding therapeutic capabilities by enlarged 4.0 mm working channel to advance EUS-guided intervention while providing full control of the procedure:



Optimized alignment of endoscopic view with ultrasound probe



A unique, enlarged  
4.0 mm working channel

Redesigned elevator shape  
and optimal elevator movement



# PENTAX Medical hygiene commitment



PENTAX Medical is using innovative products, optimizing processes, and integrating feedback from the market to directly tackle patient safety and infection prevention. We work closely with experts for market insights to ensure that all products are directly based on this need.

The EUS-J10 line-up aims to reduce the risk of cross-contamination through endoscope design, validated consumables and optimized reprocessing:

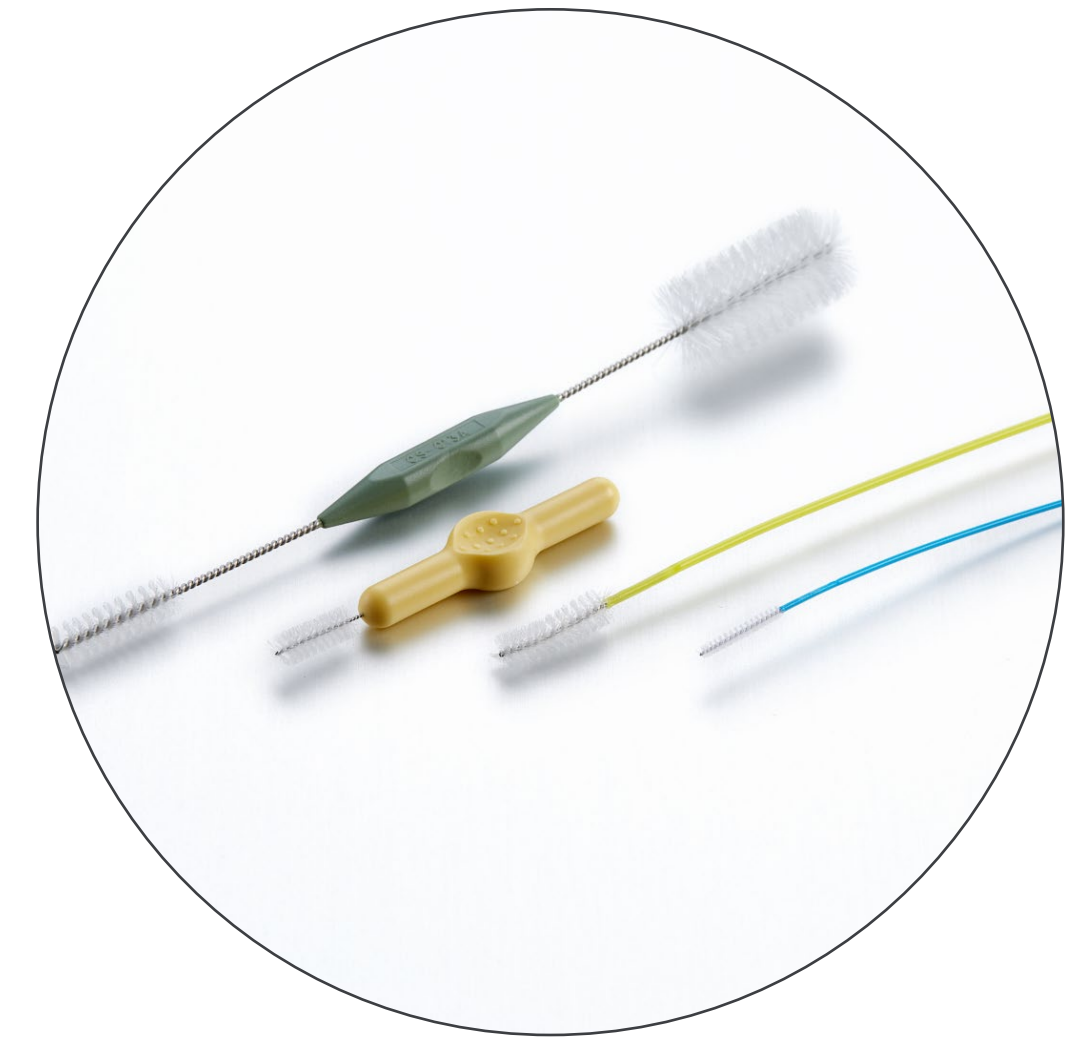


**Fewer reprocessing steps** due to:

- Sealed elevator wire channel
- Optimized elevator mechanism design



Newly designed **cleaning adapters** separating channels to ensure all channels are adequately reprocessed



- Dedicated **PROFILE single-use cleaning brushes** designed and validated to meet PENTAX Medical quality standards
- Brushable balloon suction channel



# Explore the EUS-J10 line-up: The complete solution.

## PENTAX Medical INSPIRA™ Video Processor –

The bridge for legacy endoscopes to next level image quality. The gateway to tomorrow's cutting-edge technology in diagnosis and therapy.



INSPIRA

## OPTIVISTA plus – Further improved *in vivo* diagnosis for therapeutic guidance



OPTIVISTA plus+  
EPK-i7010

## DEFINA system – Flexibility in a new light



DEFINA  
EPK-3000



ARIETTA 65

## ARIETTA 65PX –

Expertly designed to optimize productivity within compact mid-range systems



ARIETTA 750PX

## ARIETTA 750PX –

High-end ultrasound systems for advanced performance



ARIETTA 850PX

## ARIETTA 850PX –

The next evolution in ultrasound, designed for high expectations

[Click for more information on the video processor](#)

The legal manufacturer of these ultrasound platforms and non-endoscopic probes is FUJIFILM Healthcare Corporation Japan.

They are distributed in the assigned geographical areas in Europe by PENTAX Europe GmbH (on a non-exclusive basis).

ARIETTA 65PX, ARIETTA 750PX, ARIETTA 850PX, eFLOW and Real-Time Tissue Elastography (RTE) are registered trademarks or trademarks of FUJIFILM Healthcare Corporation Ltd., Tokyo, Japan.



# Overview details

The EUS-J10  
line-up

The new  
way of ...

Our Hygiene  
Commitment

The complete  
solution

Triple Aim



<b>Ultrasound Video Gastrosopes</b>	<b>EG36-J10UR</b>	<b>EG34-J10U</b>	<b>EG38-J10UT</b>
Direction of view	Forward	Forward oblique (45°)	Forward oblique (45°)
Field of view [°]	140	120	120
Depth of field [mm]	3–100	3–100	3–100
Tip angulation up/down [°]	150/70	160/130	160/130
Tip angulation right/left [°]	70/70	120/120	120/120
Distal end width [mm]	10.4	12.9	14.3
Insertion tube width [mm]	12.1	11.6	12.8
Minimum instrument channel width [mm]	2.4	2.8	4.0
Insertion portion working length [mm]	1,250	1,250	1,250
Total length [mm]	1,566	1,566	1,566
Frequency [MHz]	5–13	5–13	5–13
Scan method	Radial	Convex	Convex
Scan angle [°]	360	150	150

In the interest of technical progress, specifications may change without notice.



# Biliopancreatic solution

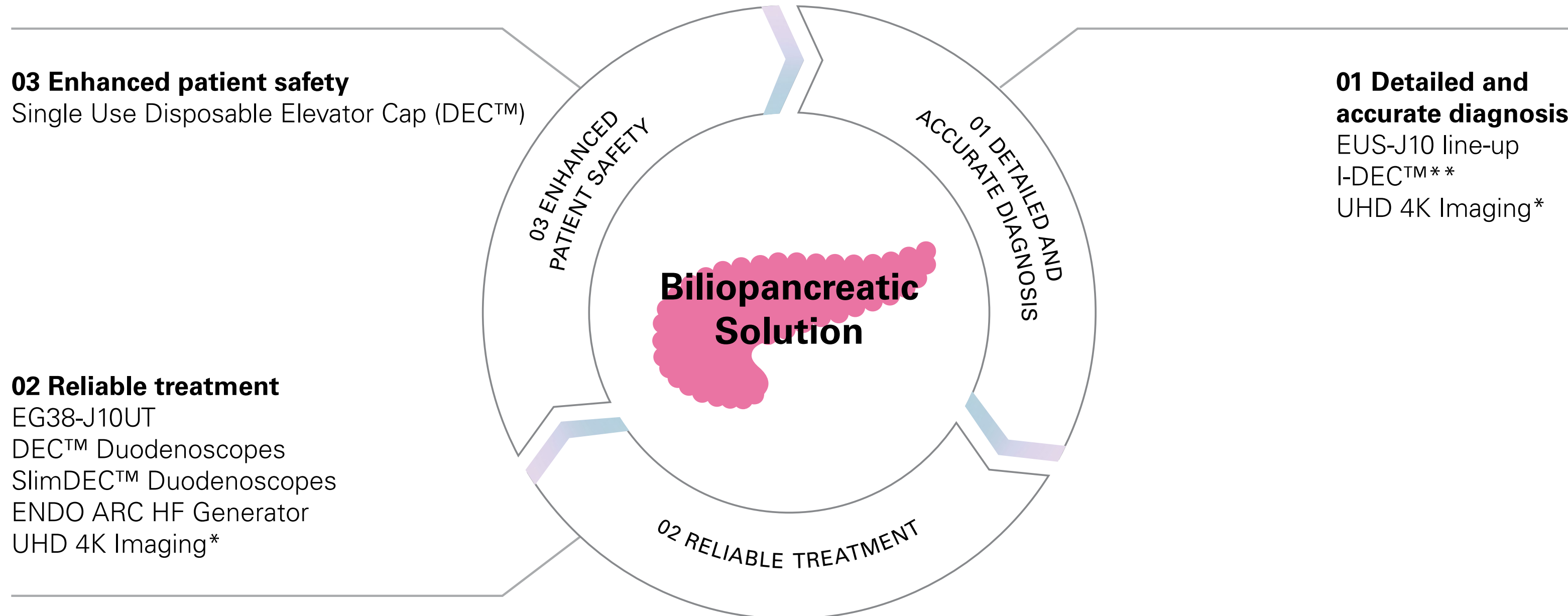


The PENTAX Medical Ultrasound Video Gastroscope EUS-J10 line-up in combination with ultrasound systems completes our biliopancreatic solution.

[Click for more information on DEC™](#)

[Click for more information on RTE and CHI](#)

[Click for more information on i-scan](#)  
[www.i-scanimaging.com](http://www.i-scanimaging.com)



DEC™ and PENTAX Medical INSPIRA™ are registered trademarks of HOYA Corporation, PENTAX Medical Division.

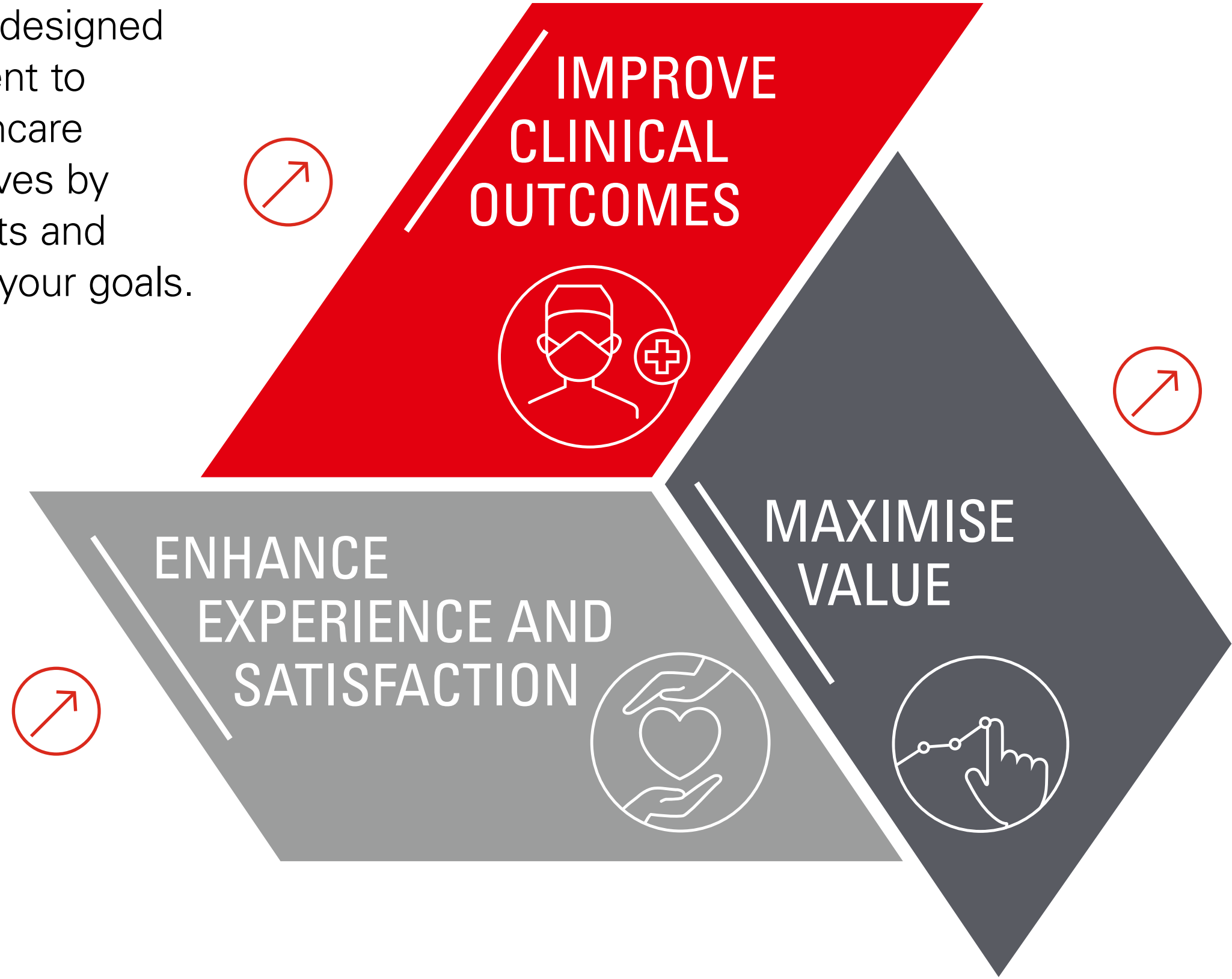
\* Available with PENTAX Medical INSPIRA™  
\*\* ED34-i10cT2



# PENTAX Medical Triple Aim



Our **Triple Aim** program is designed to deliver on our commitment to support you and your healthcare organisation's wider objectives by providing programs, products and solutions to help you reach your goals.



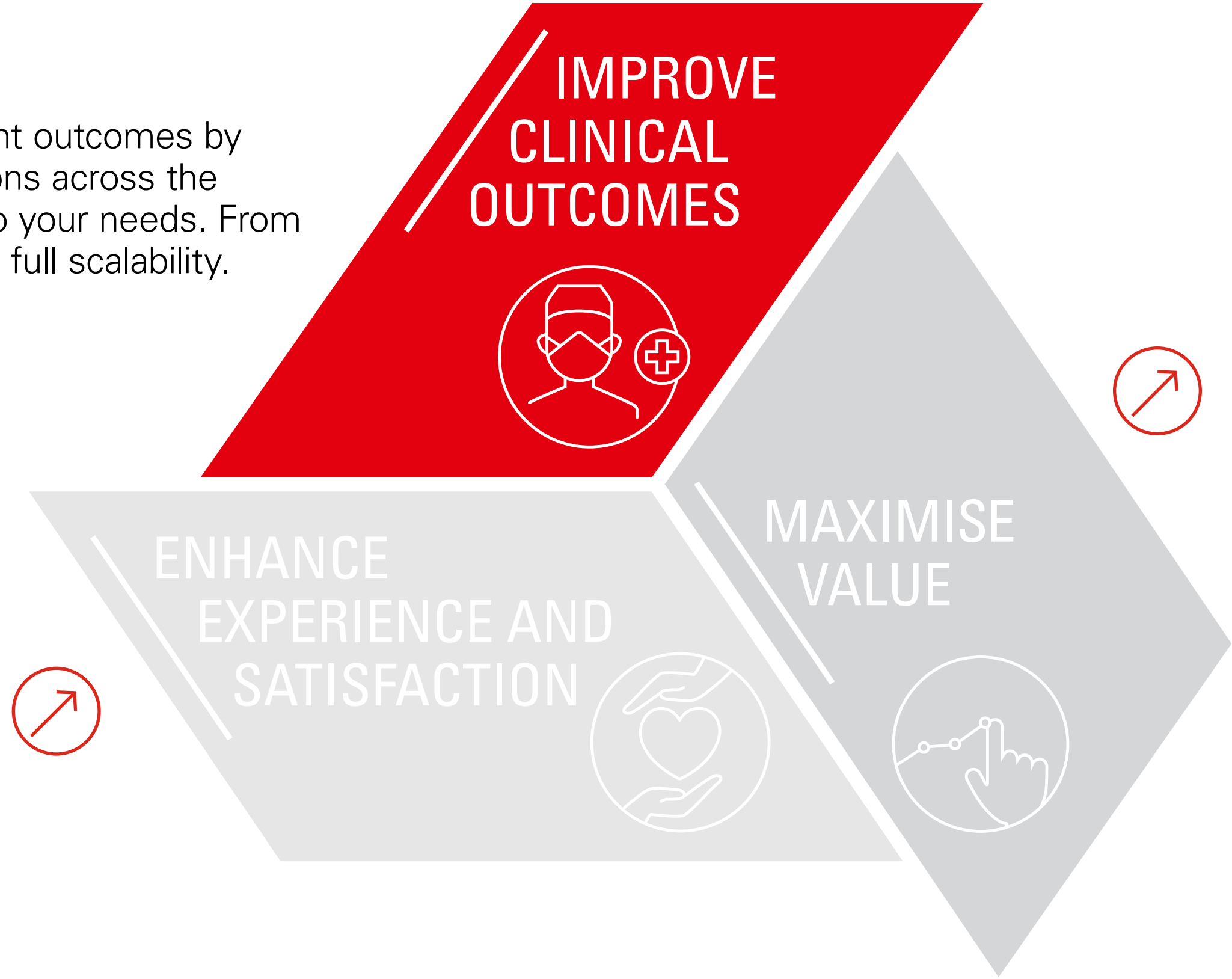
FIND OUT HOW  
**THE EUS-J10**  
LINE-UP  
SUPPORTS  
TRIPLE AIM



# PENTAX Medical Triple Aim



**Enabling** you to improve patient outcomes by offering evidence-based solutions across the continuum of care, dedicated to your needs. From screening through therapy with full scalability.



FIND OUT HOW  
**THE EUS-J10**  
LINE-UP  
SUPPORTS  
TRIPLE AIM



# PENTAX Medical Triple Aim



**Ensuring** value by enabling you to improve your efficiency and minimize healthcare costs.

FIND OUT HOW  
**THE EUS-J10**  
LINE-UP  
SUPPORTS  
TRIPLE AIM

# PENTAX Medical Triple Aim



**Enriching** patient and provider's experience by empowering every member of your care team to achieve optimal outcomes through products, education and support.



FIND OUT HOW  
**THE EUS-J10**  
LINE-UP  
SUPPORTS  
TRIPLE AIM



# Your needs shape our service



**PROXIMITY WITH MULTILEVEL EXPERTISE**

50+ PENTAX Medical partners across EMEA

Service Partners network all across Europe, Middle East, and Africa with certified technicians

Multilingual customer service

● PENTAX Medical companies  
● PENTAX Medical partners

**TRANSPARENCY AND PREDICTABILITY**

IMPROVE CLINICAL OUTCOMES

ENHANCE EXPERIENCE AND SATISFACTION

MAXIMIZE VALUE

2000+ Up to date loaner fleet

Information and traceability online

Best-in-time turnaround on repairs

Tailored performance reports

**MAXIMIZE VALUE**

Hygiene and application personalized support

On-site training with application specialists

Wide contract offering to match customer needs

Original spare parts

For PENTAX Medical Service, our partnership means your success.

Home

The EUS-J10  
line-up

The new  
way of ...

Our Hygiene  
Commitment

The complete  
solution

Triple Aim



**EMEA Headquarter  
Germany**

PENTAX Europe GmbH  
Julius-Vosseler-Straße 104 • 22527 Hamburg  
T +49 (0)40 561 92-0 • F +49 (0)40 560 42 13  
info.emea@pentaxmedical.com • www.pentaxmedical.com



**Manufacturer**

HOYA Corporation  
6-10-1 Nishi-shinjuku  
Shinjuku-ku • Tokyo  
160-0023 Japan

CE 0123 Medical devices class IIa. This product must be used only by healthcare professionals. Before use and for detailed product specifications, please refer to the instructions for use. In the interest of technical process, specifications may change without notice. PENTAX Medical® is a registered trademark of HOYA Corporation.

© Copyright 2023 HOYA Corporation. All rights reserved.

